



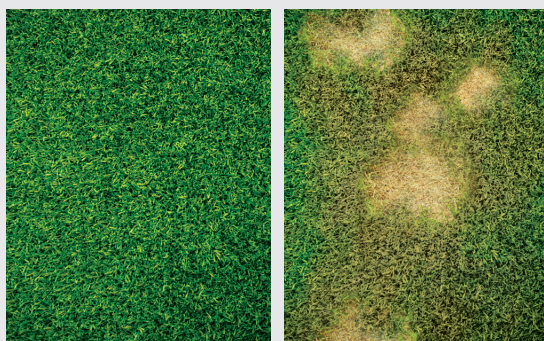
Fast Acting Dual-action Granular that Treats & Prevents Localised Dry Spot

Aqueduct Flex is a granular surfactant which effectively treats and prevents drought stress symptoms across all turf varieties. Its fast-acting, dual-action, easy spread formula delivers superior performance, offering turf care professionals flexible solutions for managing drought stress, including localised dry spot.

At the treatment rate, Aqueduct Flex provides rapid turf recovery, delivering visible results in as little as 3 days. When applied monthly at the lower preventative rate, it offers up to 30 days of protection against localised dry spot.

Key Benefits:

- Provides rapid recovery of drought stressed turf with visible results in as little as 3 DAYS when used at the treatment rate
- Provides up to 30-DAY PROTECTION against the development of localised dry spot when applied on a monthly basis at the preventative rate
- Safe to use on all turf varieties and areas, including golf course greens, tees, fairways, sports fields, and residential lawns
- Safe to use on ornamental gardens, landscapes, trees, and shrubs



Rapid recovery in as little as 3 Days










TREATMENT RATE:
1.25 Kg/100m² weekly

PREVENTION RATE:
0.5 Kg/100m² monthly

Application Recommendations:

- For treatment of drought stress or localised dry spot apply at 1.25 Kg/100 m². Reapply at 1.25 Kg/100 m² on a weekly basis until full recovery is achieved.
- For preventative treatment of drought stress apply at 0.5 Kg/100 m². Reapply monthly for up to 30-day protection against symptoms of drought stress.
- Aqueduct Flex does not need to be watered in following application. Irrigate before next mowing or leave boxes off.

Aqueduct Flex ProFacts	
WHAT IT DOES:	Treats and prevents symptoms of drought stress for all turf varieties.
WHEN TO APPLY:	Whenever symptoms of drought stress initially appear, or on a monthly basis to prevent the onset of symptoms.
COVERAGE:	<p>Treatment: Covers 1,600m² at 1.25 kg/100m²</p> <p>Preventative: Covers 4,000m² at 0.5 kg/100m²</p> <p>Spreader setting guidelines provided on the bag, however it is recommended to calibrate your spreader before application to ensure accurate coverage.</p>
WHERE TO USE:	<p>Safe to use on all turf types, ornamental gardens, shrubs, and trees.</p> <div>  GOLF  SOD  HOME  SPORTS FIELDS  MUNICIPAL & SCHOOLS  TREES & SHRUBS  ORNAMENTAL </div>